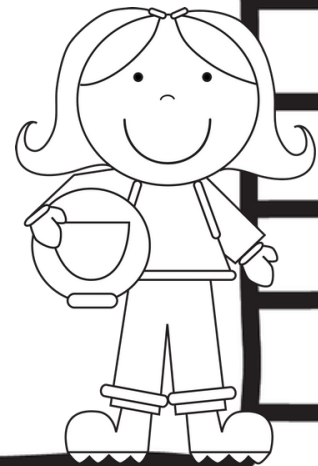
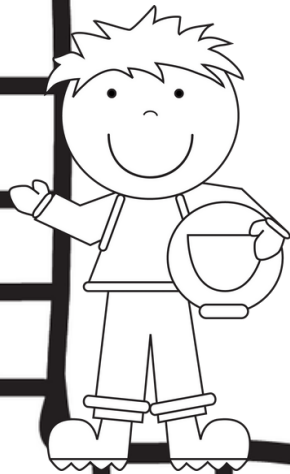


All about my trip to space...



# SPACE FACTS



One million Earths could fit inside the sun.

An asteroid about the size of a car enters Earth's atmosphere roughly once a year - but it burns up before it reaches us.

The sunset on Mars appears blue.

There are more stars in the universe than grains of sand on all the beaches on Earth.

Because of lower gravity, a person who weighs 200 pounds on Earth would only weigh 76 pounds on the surface of Mars.

You wouldn't be able to walk on Jupiter, Saturn, Uranus, or Neptune because they have no solid surface!

Label each planet.





My



Very



Eager



Mother



Just

Served



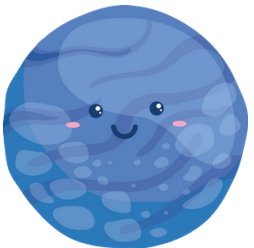
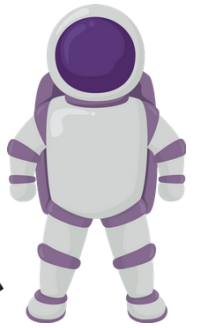
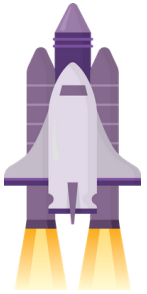
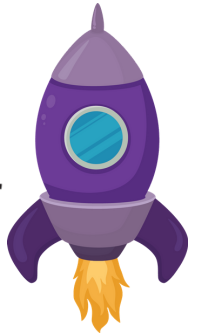
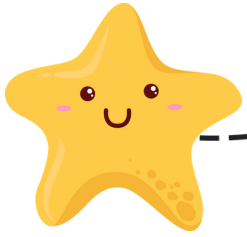
Us



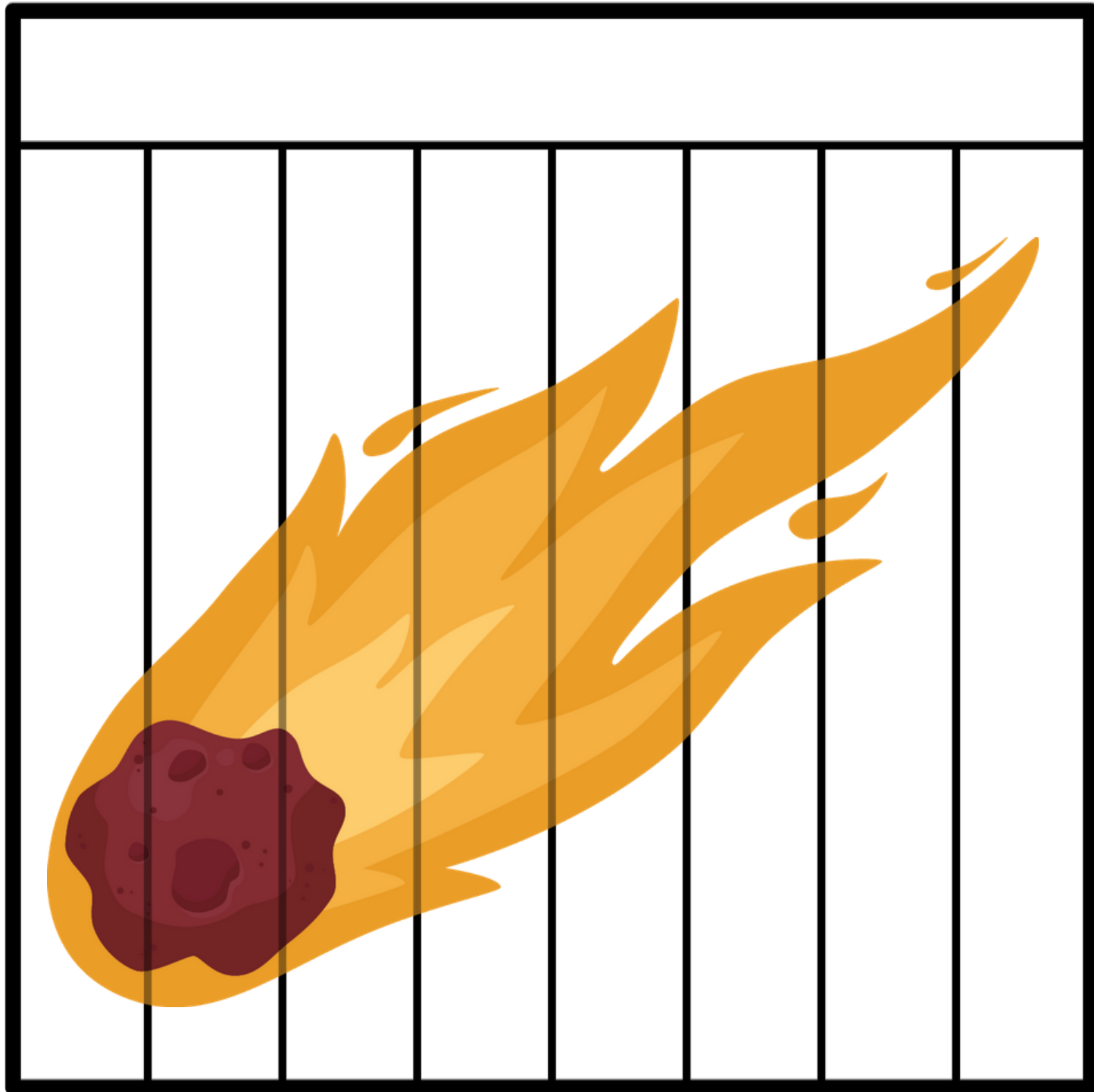
Nachos



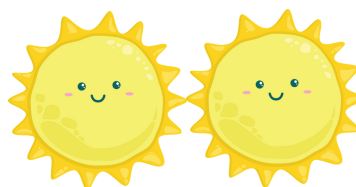
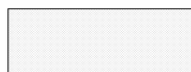
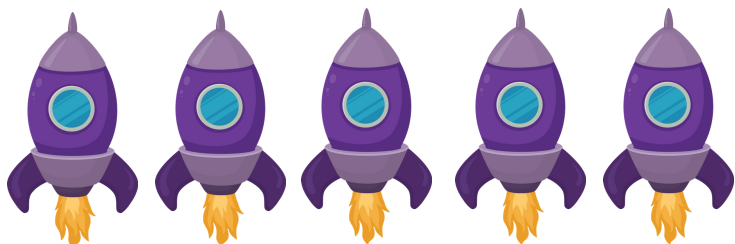
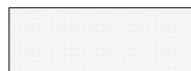
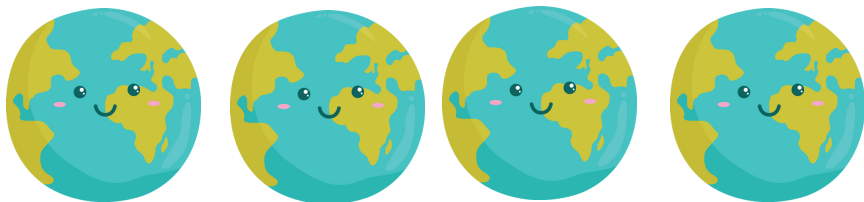
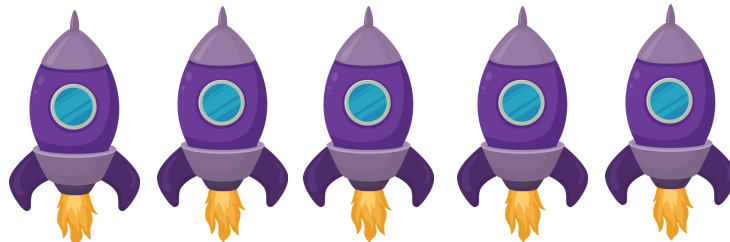
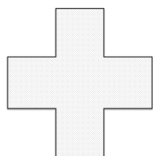
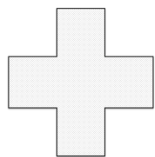
Trace along the dotted lines.



Cut out the puzzles. Put it back together  
by gluing it to a blank sheet of paper.



Add or subtract.





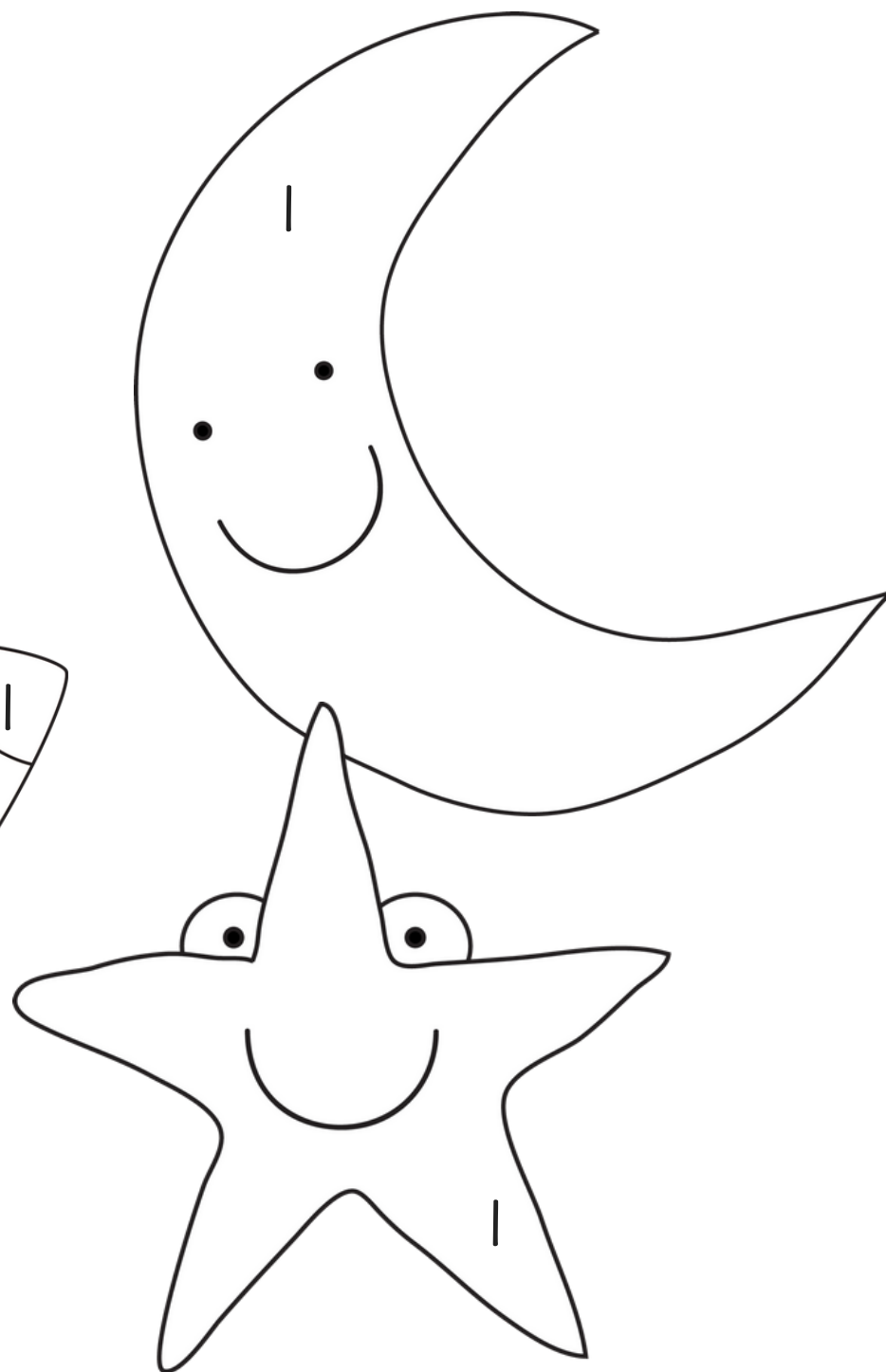
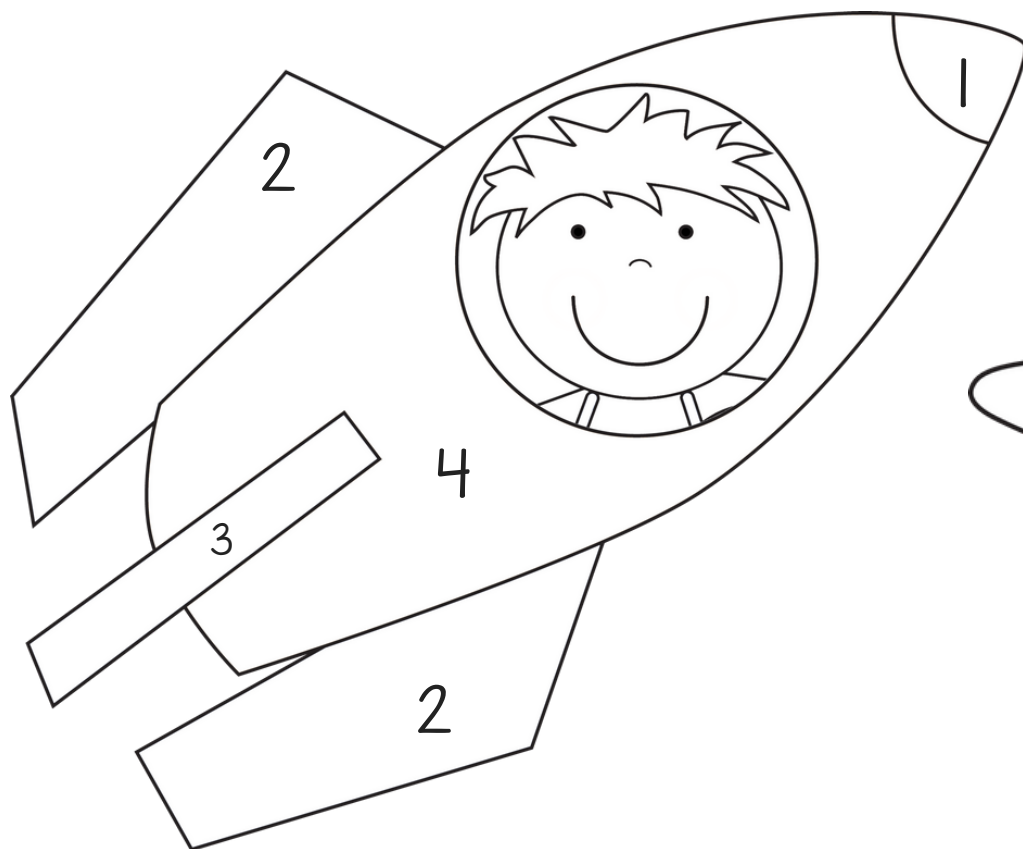
Color using the code below.

1 = yellow

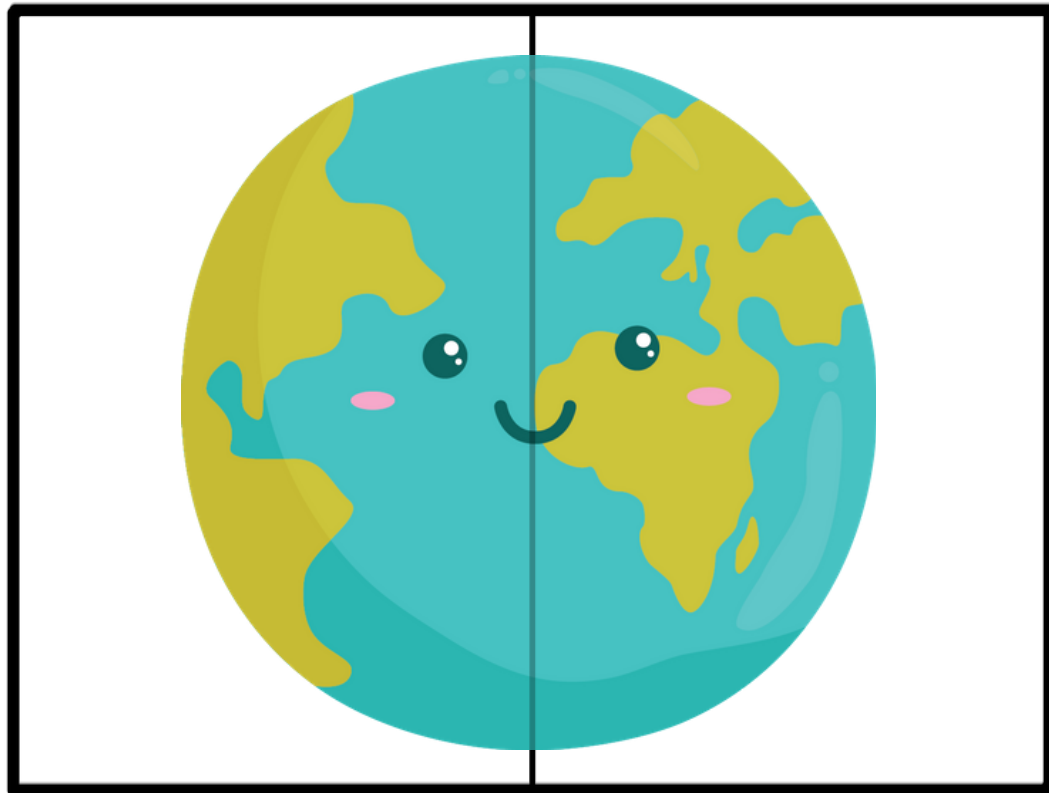
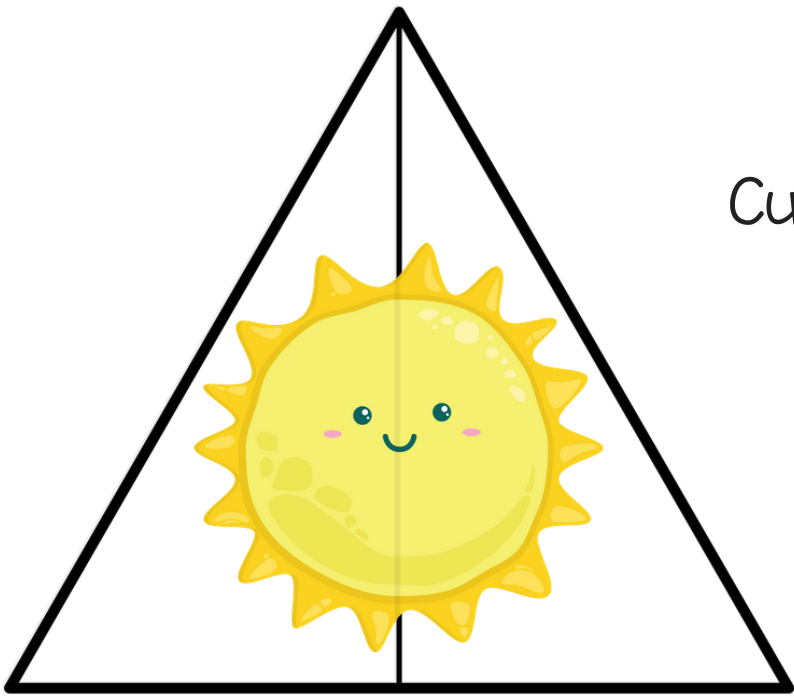
2 = blue

3 = black

4 = red



Cut out, then match.

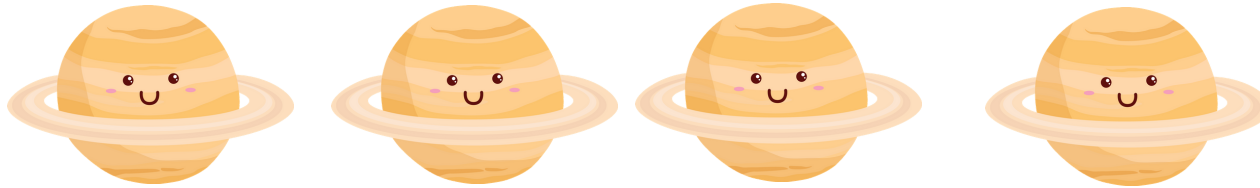
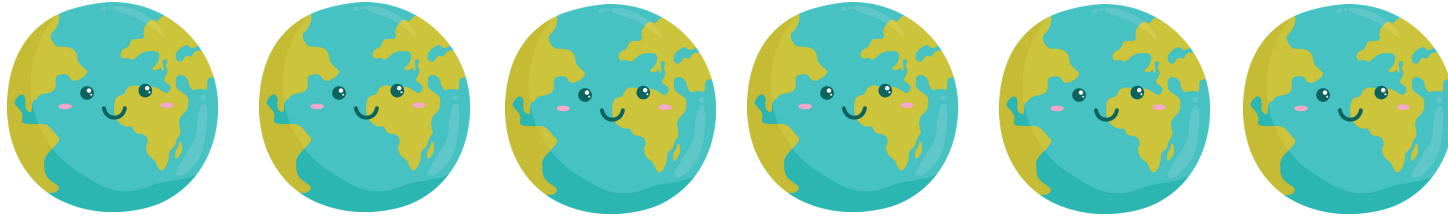


Color over the capital letters with blue.

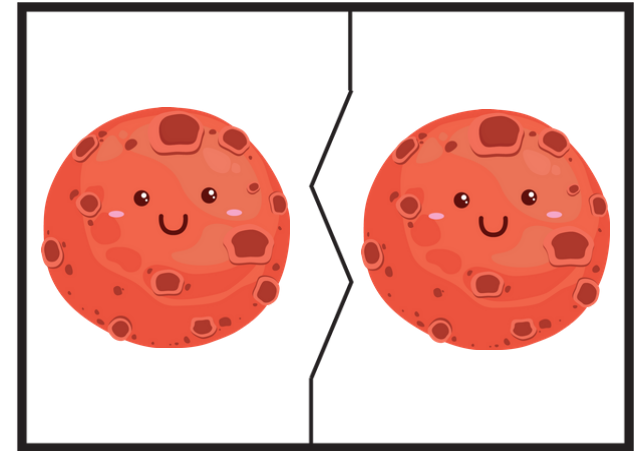
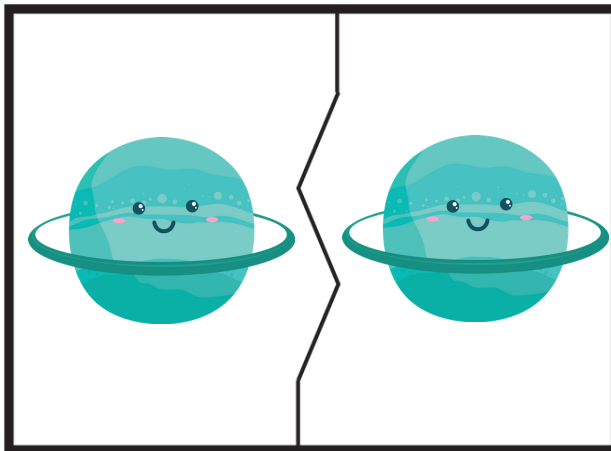
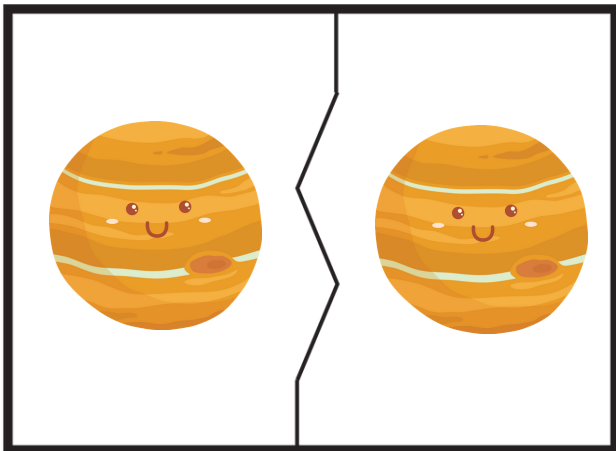
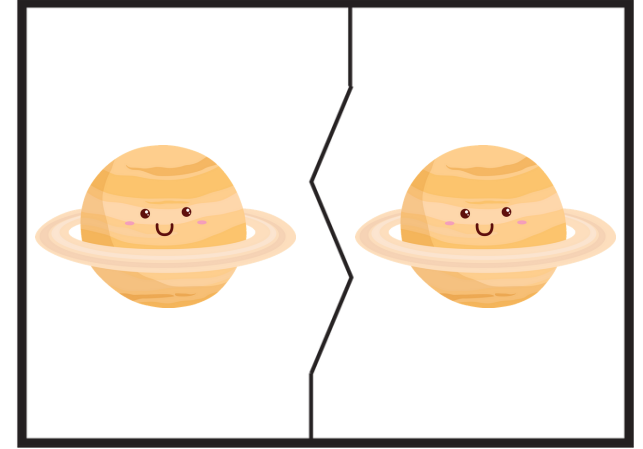
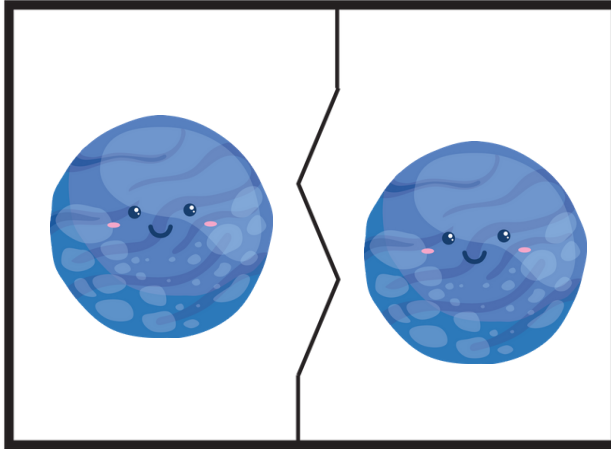
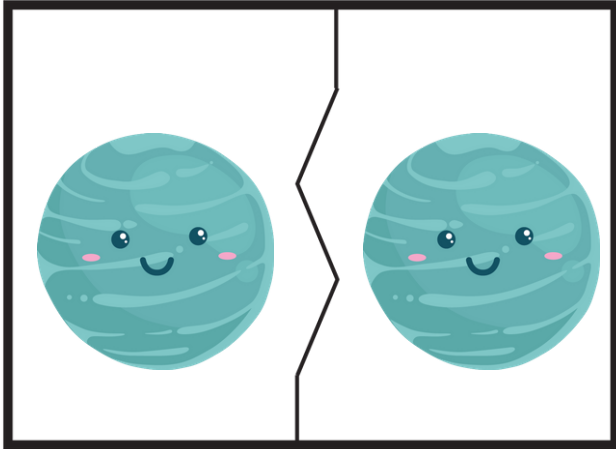
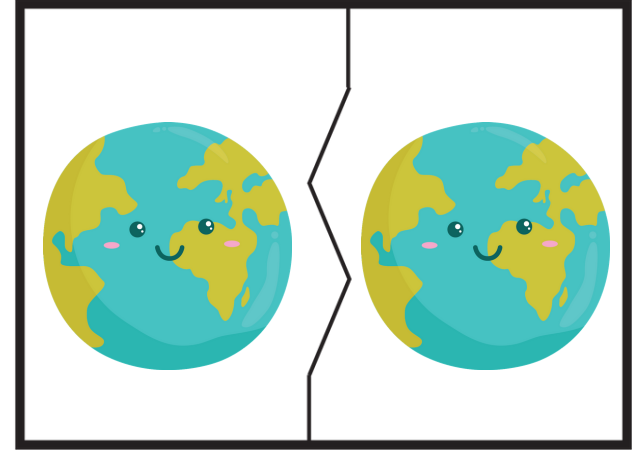
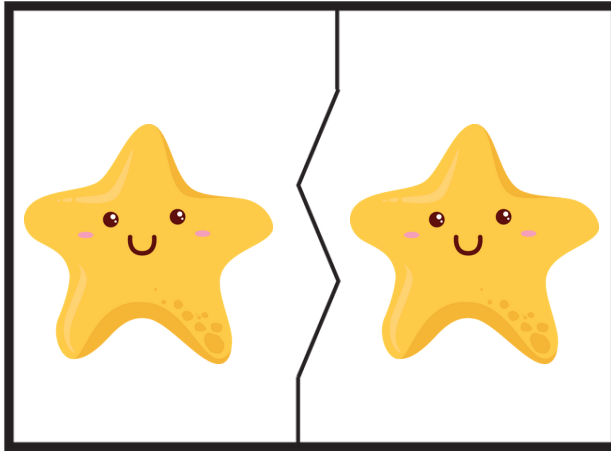
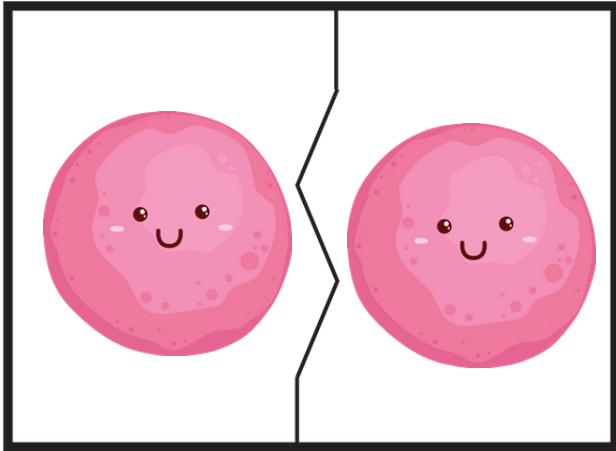
Color over the lower case letters with black. What does it say?

h	k	r	h	i	h	r	i	h	z
r	I	b	L	O	V	E	r	b	k
b	k	i	o	f	r	b	i	h	r
h	x	S	p	A	C	E	e	b	x
i	r	h	d	c	b	e	b	z	h
h	b	i	z	k	h	z	r	k	z
b	z	z	h	b	r	z	b	h	i
h	r	i	b	k	i	b	h	i	r

How many are in each row?



# Memory Game (Cut out and match)



Thank you for downloading my free outer space activity pack! Please sign up for my email newsletter to get access to more fun!

[www.slapdashmom.com](http://www.slapdashmom.com)

Space facts from NatGeo.  
Amazing freebies would not be possible without these clip art creators. Huge shout out to:

